



SOUTHGATE PLAZA

14300 US-431
Guntersville, Alabama



GATEWAY
COMMERCIAL BROKERAGE

300 Market Street NE, Suite 3
Decatur, AL 35601
(256) 355-0721
www.gatewaycommercial.com

SOUTHGATE PLAZA

14300 US-431 | Guntersville, Alabama

Office/Retail Space



PROPERTY OVERVIEW

Southgate Plaza is situated at the intersection of US Highway 431 and Wyeth Drive in Guntersville, Alabama. This shopping center spans approximately 118,000 square feet of prime retail space and is anchored by major retailers such as Foodland and Big Lots. With its strategic location and anchor tenants, Southgate Plaza provides a highly desirable environment for retail businesses seeking to establish or expand their presence in Guntersville.

DEMOGRAPHICS

POPULATION

1 Mile 1,337
3 Mile 8,122
5 Mile 7,885

HOUSEHOLDS

1 Mile 590
3 Mile 3,437
5 Mile 3,046

HOUSEHOLD INCOME

1 Mile \$104,431 (AVG)
3 Mile \$90,332 (AVG)
5 Mile \$89,930 (AVG)

DAILY TRAFFIC COUNTS

US Hwy 431 29,560 AADT
AL Hwy 79 S 31,089 AADT

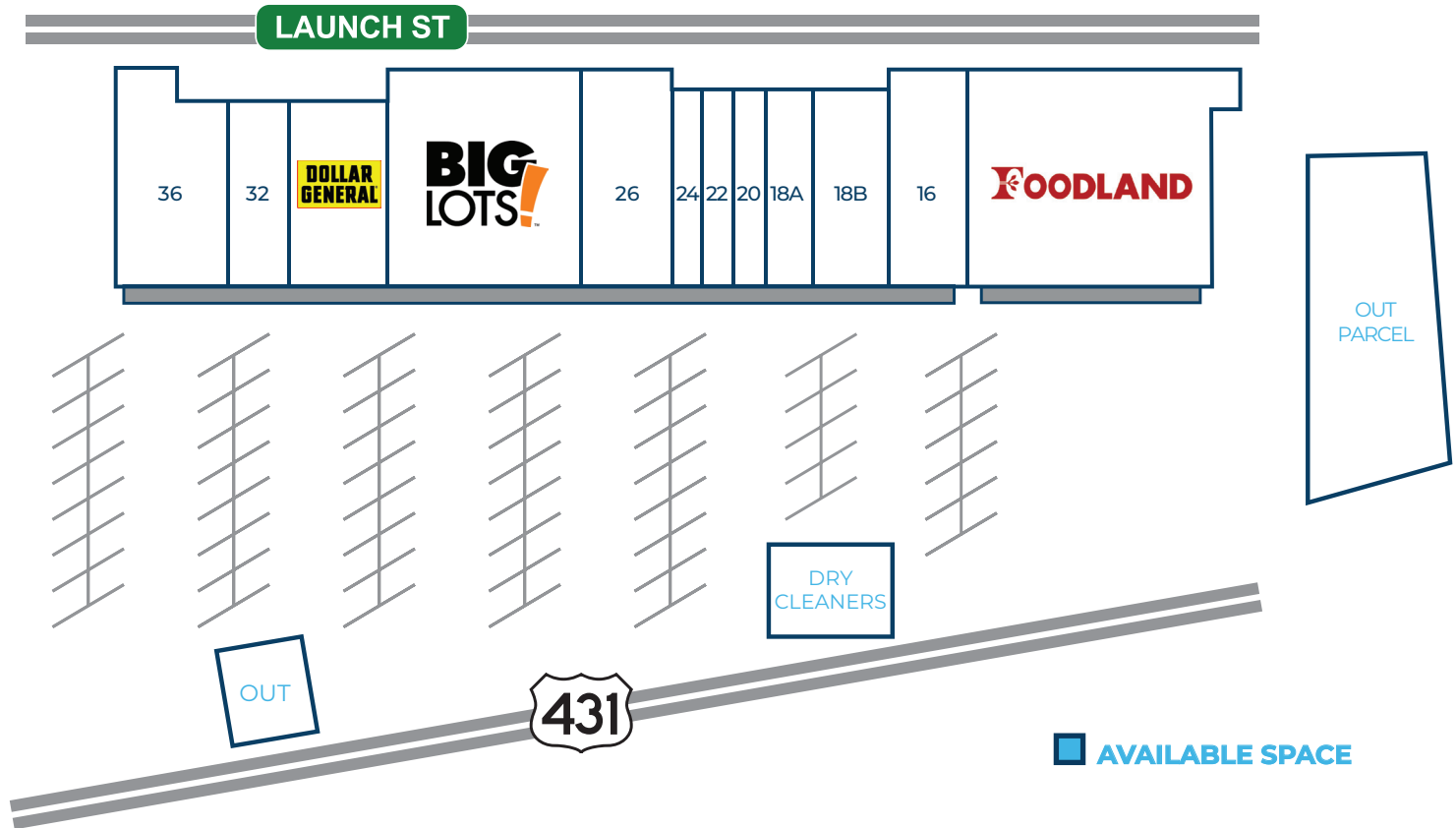


Emmette Barran, CCIM, Qualifying Broker
(256) 303-1703
ebarran@gatewaycommercial.net



George Barran, Broker
(256) 303-1109
gbarran@gatewaycommercial.net

SOUTHGATE PLAZA 14300 US-431 | Guntersville, Alabama



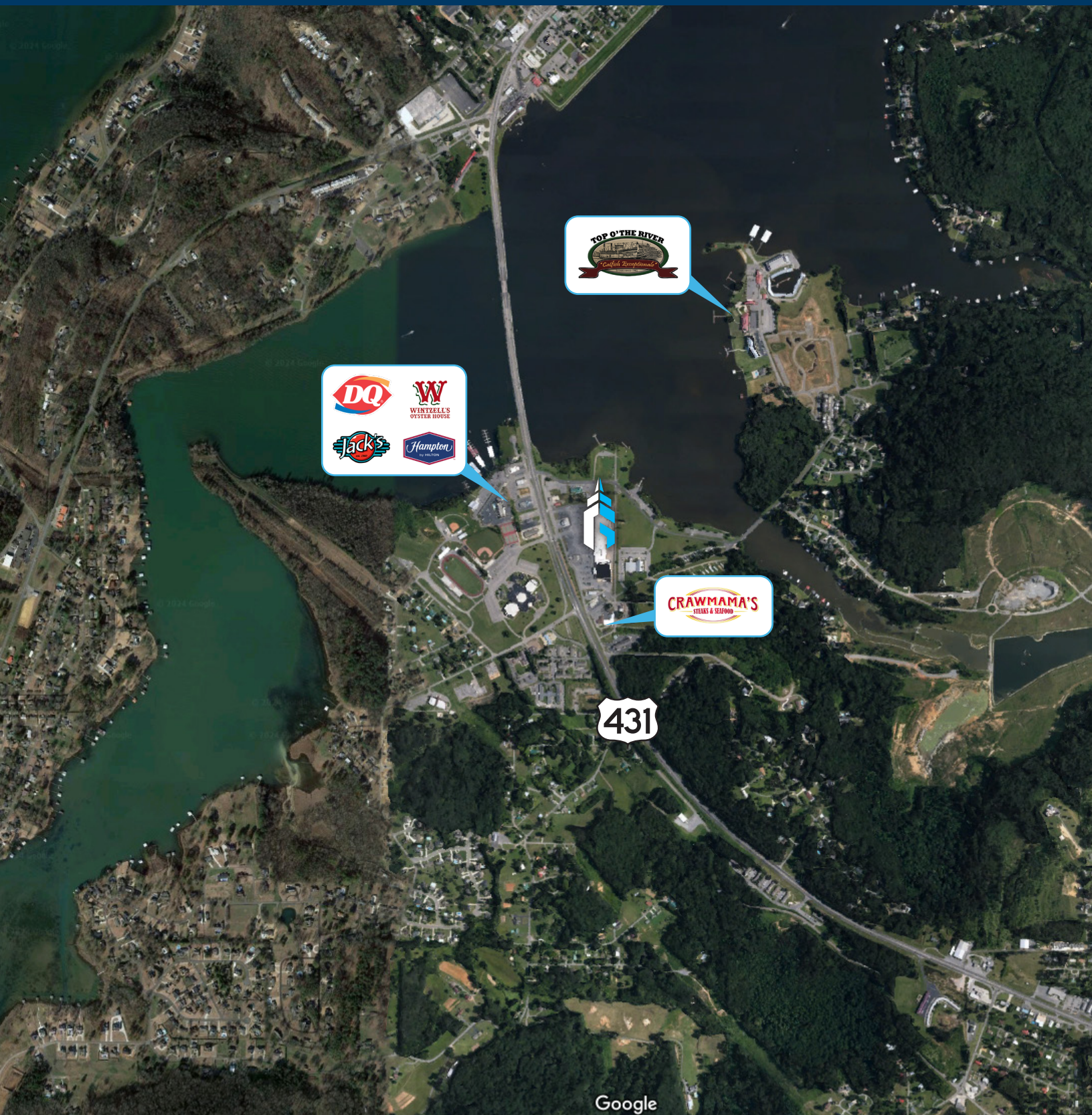
36	PET SUPPLY PLUS	11,840 SF	22	NAIL DESIGN	2,100 SF
32	EL CAMINO REAL	3,925 SF	20	HOLA MICHIOACAN ICE CREAM	2,100 SF
30	DOLLAR GENERAL	9,600 SF	18A	LENDNATION	2,500 SF
28	BIG LOTS	29,750 SF	18B	TOC	5,500 SF
26	WILMORE GYM	8,507 SF	16	FACTORY CONNECTION	8,475 SF
24	ROYAL VAPE	2,100 SF	14	FOODLAND	31,650 SF

NOTE: ALL SQUARE FOOTAGES ARE APPROXIMATE.

The information contained herein is derived from sources deemed reliable. Gateway Commercial Brokerage assumes no liability for errors or omissions. Offering is subject to change or be withdrawn without notice.



SOUTHGATE PLAZA 14300 US-431 | Guntersville, Alabama





300 Market Street NE, Suite 3 | Decatur, AL 35601
(256) 355-0721 | www.gatewaycommercial.com

The information contained herein is derived from sources deemed reliable. Gateway Commercial Brokerage assumes no liability for errors or omissions. Offering is subject to change or be withdrawn without notice.